



Specs:

Bedrooms:	3
Bathrooms:	3
Square Footage:	2,698 Sq.Ft.
Lower Level:	818 Sq. Ft.
Main Level:	1,880 Sq. Ft.
Width:	51' - 9"
Depth:	65' - 5"

Options Shown:

- 1 Screened in Porch
- 2 3'-0" Wider Garage w/ Two Doors
- 3 Coffered Ceiling
- 4 Built-ins

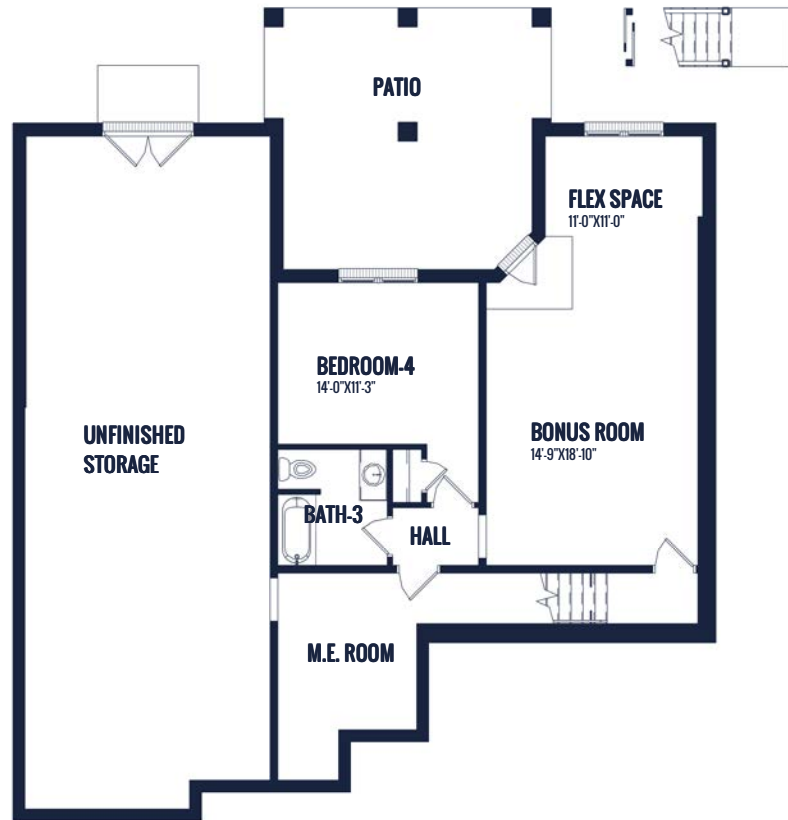
Watercolors, illustrations, and floor plans are for marketing purposes only and are subject to change at builder's discretion. Square footage is outside veneer and should be independently verified. This is not a legal document.

1/24/2024 1:46:46 PM

FLOOR PLAN: IVY BROOK LOT 13



MAIN LEVEL



LOWER LEVEL

Watercolors, illustrations, and floor plans are for marketing purposes only and are subject to change at builder's discretion. Square footage is outside veneer and should be independently verified. This is not a legal document.
1/24/2024 1:46:48 PM